



Primrose FE II

HOMES FROM
\$467,990

CLASSIC SERIES

EAST OAK CREEK 60-65

112 SWEETWATER DRIVE, COMMERCE, TX 75428

3,336
SQUARE FEET

3
BEDROOMS

3.5
BATHROOMS

3
CAR GARAGE





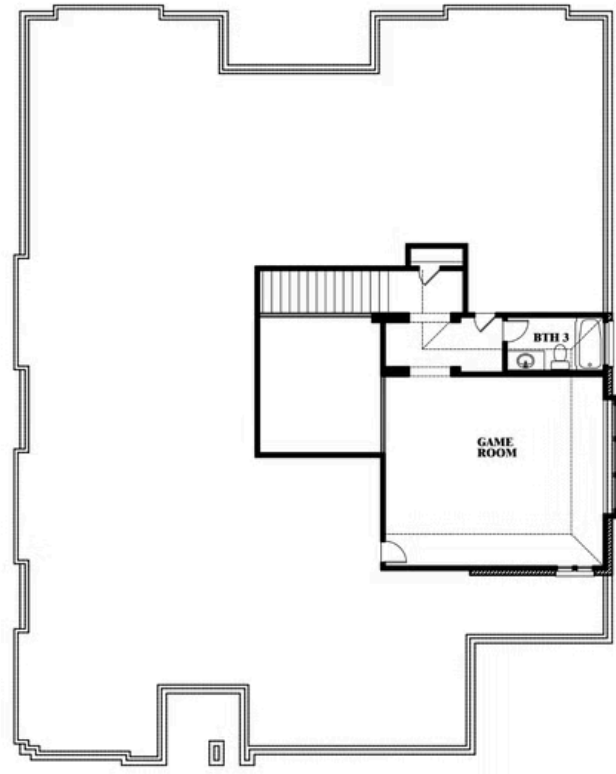
Primrose FE II

EAST OAK CREEK 60-65

112 SWEETWATER DRIVE, COMMERCE, TX 75428



Primrose FE II



This brochure is for general informational purposes and is to be used as a guide only. Changes may be made during the development process and floorplans, dimensions, fixtures, fittings, finishes and specifications are subject to change without notice. Window placement, balcony configuration, wardrobe sizes and living areas may vary slightly within each plan type. EQUAL HOUSING OPPORTUNITY

