



# Dewberry III

HOMES FROM  
**\$641,990**

CLASSIC SERIES

**ARROWBROOKE CLASSIC 60**

2200 BROKEN ARROW DRIVE, AUBREY, TX 76227

**3,261**  
SQUARE FEET

**5**  
BEDROOMS

**3.5**  
BATHROOMS

**2**  
CAR GARAGE





# Dewberry III

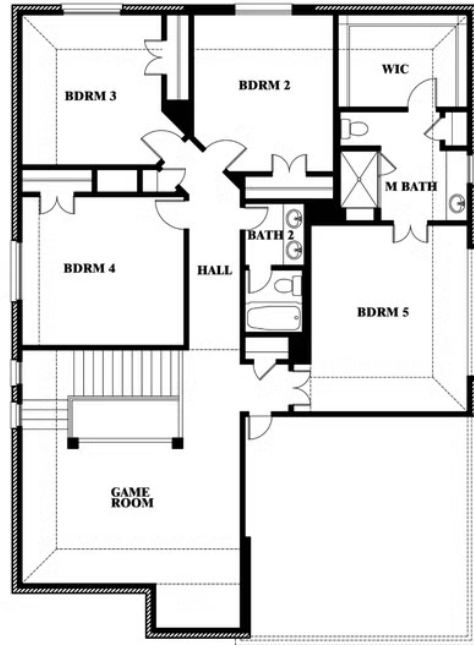
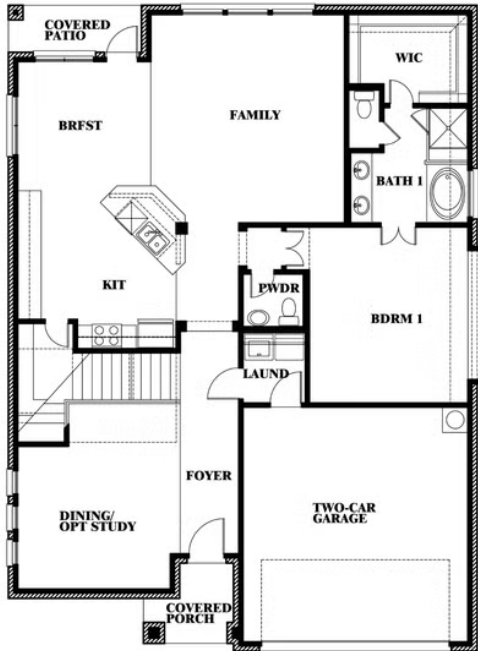
## ARROWBROOKE CLASSIC 60

2200 BROKEN ARROW DRIVE, AUBREY, TX 76227

**DEWBERRY III FLOOR PLAN**



### Dewberry III



This brochure is for general informational purposes and is to be used as a guide only. Changes may be made during the development process and floorplans, dimensions, fixtures, fittings, finishes and specifications are subject to change without notice. Window placement, balcony configuration, wardrobe sizes and living areas may vary slightly within each plan type. EQUAL HOUSING OPPORTUNITY

