



Hawthorne

HOMES FROM
\$373,990

CLASSIC SERIES

SUNSET RIDGE

200 CIENNA COURT, ALVARADO, TX 76009

2,235
SQUARE FEET

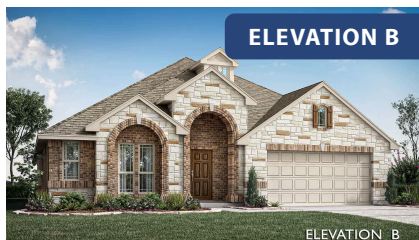
4
BEDROOMS

2.0
BATHROOMS

2
CAR GARAGE

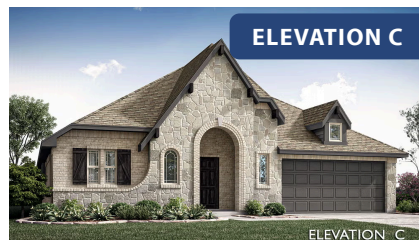


ELEVATION A



ELEVATION B

ELEVATION B



ELEVATION C

ELEVATION C





Hawthorne

SUNSET RIDGE

200 CIENNA COURT, ALVARADO, TX 76009



Hawthorne



This brochure is for general informational purposes and is to be used as a guide only. Changes may be made during the development process and floorplans, dimensions, fixtures, fittings, finishes and specifications are subject to change without notice. Window placement, balcony configuration, wardrobe sizes and living areas may vary slightly within each plan type. EQUAL HOUSING OPPORTUNITY



Document generated Dec 21, 2024. Prices, plans, square footage, features and materials are subject to change at any time without notice and vary among communities. Listed prices are for informational purposes only, are not binding, and do not create any contractual obligation(s). The price of any home is dependent on numerous factors, all of which are unique to a specific home, and is not guaranteed until specified in a binding contract. Pricing of elevations and additional optional beds/baths vary per plan. Some plans require a premium homesite. Please ask the Community Manager for details. Renderings of homes are artist concepts and may not reflect exact colors and materials.



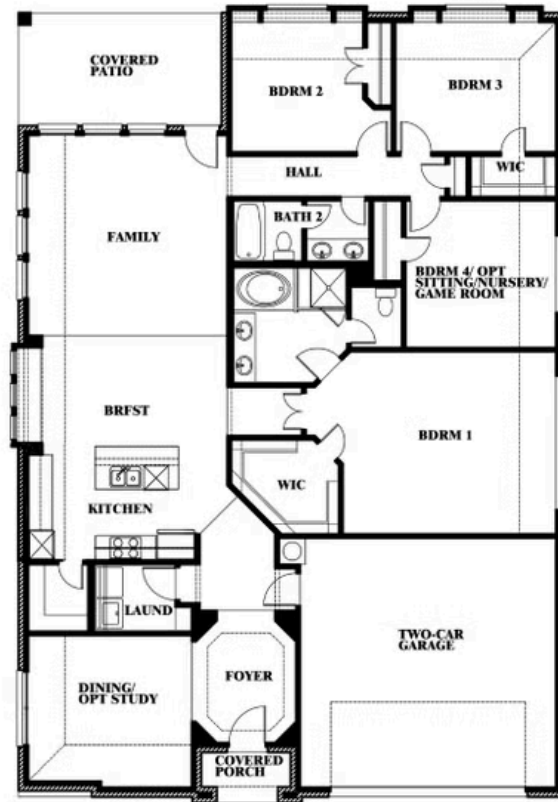
Hawthorne

SUNSET RIDGE

200 CIENNA COURT, ALVARADO, TX 76009



Hawthorne Opt. Deluxe Kitchen



This brochure is for general informational purposes and is to be used as a guide only. Changes may be made during the development process and floorplans, dimensions, fixtures, fittings, finishes and specifications are subject to change without notice. Window placement, balcony configuration, wardrobe sizes and living areas may vary slightly within each plan type. EQUAL HOUSING OPPORTUNITY

