



# Carolina IV

HOMES FROM  
**\$434,990**

CLASSIC SERIES

**SUNSET RIDGE**

200 CIENNA COURT, ALVARADO, TX 76009

**3,280**  
SQUARE FEET

**4**  
BEDROOMS

**3.0**  
BATHROOMS

**2**  
CAR GARAGE



**ELEVATION D**



**ELEVATION A**

ELEVATION A



**ELEVATION AS**

ELEVATION AS



**ELEVATION C**

ELEVATION C



**ELEVATION E**

ELEVATION E



**ELEVATION F**

ELEVATION F





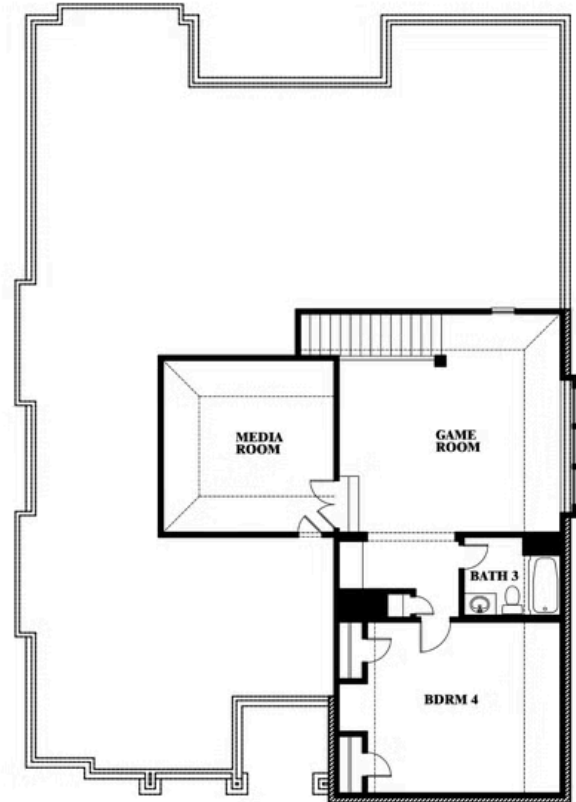
# Carolina IV

## SUNSET RIDGE

200 CIENNA COURT, ALVARADO, TX 76009



# Carolina IV



This brochure is for general informational purposes and is to be used as a guide only. Changes may be made during the development process and floorplans, dimensions, fixtures, fittings, finishes and specifications are subject to change without notice. Window placement, balcony configuration, wardrobe sizes and living areas may vary slightly within each plan type. EQUAL HOUSING OPPORTUNITY

