



1001 Raptor Road

ALVARADO, TX 76009

EAGLE GLEN

VIOLET IV FLOOR PLAN

2845
SQUARE FEET**4**
BEDROOMS**3.5**
BATHROOMS**2**
CAR GARAGE

The Classic Series Violet IV floor plan is a two-story home with four bedrooms and three and a half bathrooms. Features of this plan include a covered patio, large family room with a soaring ceiling, study, open kitchen with custom cabinets and island, media room, game room; and a downstairs primary suite with a garden tub, separate shower, and a walk-in closet. This plan has the option for another bedroom and full bath at the study. Contact us or visit our model home for more information about building this plan.





1001 Raptor Road

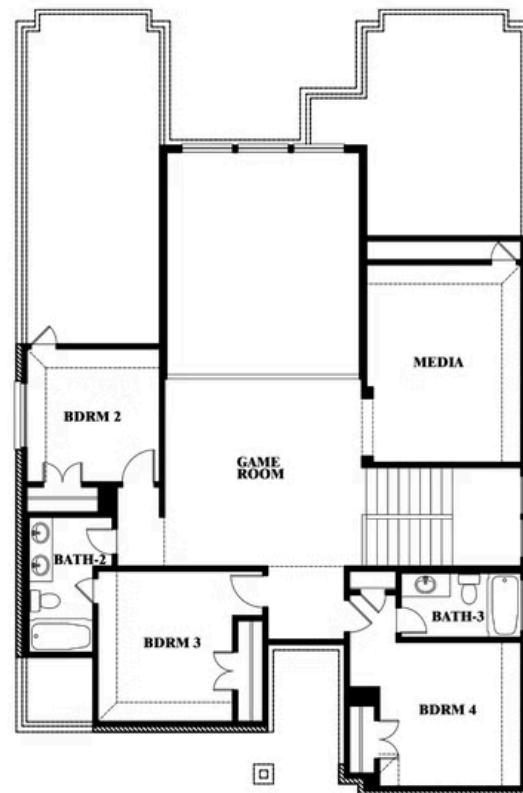
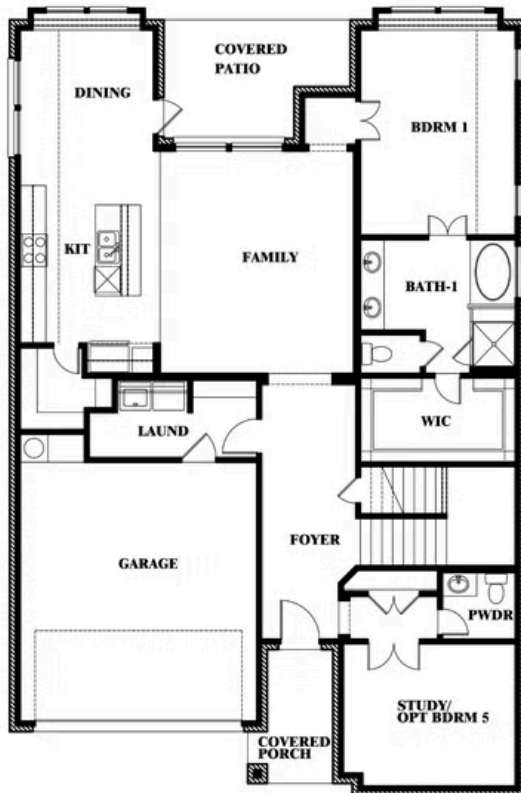
ALVARADO, TX 76009

VIOLET IV FLOOR PLAN

VIOLET IV FLOOR PLAN



Violet IV



This brochure is for general informational purposes and is to be used as a guide only. Changes may be made during the development process and floorplans, dimensions, fixtures, fittings, finishes and specifications are subject to change without notice. Window placement, balcony configuration, wardrobe sizes and living areas may vary slightly within each plan type. EQUAL HOUSING OPPORTUNITY



Document generated Feb 22, 2025. Prices, plans, square footage, features and materials are subject to change at any time without notice and vary among communities. Listed prices are for informational purposes only, are not binding, and do not create any contractual obligation(s). The price of any home is dependent on numerous factors, all of which are unique to a specific home, and is not guaranteed until specified in a binding contract. Pricing of elevations and additional optional beds/baths vary per plan. Some plans require a premium homesite. Please ask the Community Manager for details. Renderings of homes are artist concepts and may not reflect exact colors and materials.